

ARC

MODULAR
2020
SUMMER
SALES CATALOGUE

SAVINGS UNTIL
AUGUST 14th

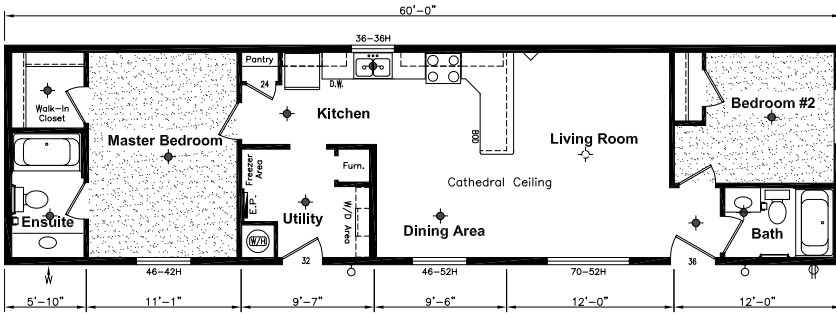


ALL HOMES INCLUDE FREE FREIGHT UP TO 400KM!!

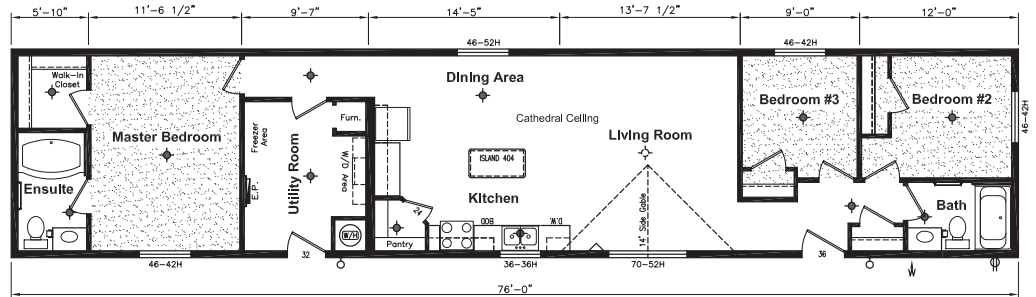
ARC PM-124 PARK MODEL 12'X44' 528SF
 2 BED, 1 BATH, OPEN CONCEPT
 TRIPLE AXEL 3 SEASON HOME
 WHIRLPOOL KITCHEN APPLIANCES
STARTING AT \$69,895



2020 ARC ML-164 16'X60' 960SF
 2 BED, 2 BATH, OPEN CONCEPT, WHIRLPOOL
 APPLIANCES, UTILITY ROOM, CHOOSE YOUR
 DECORS
STARTING AT \$90,895
ECO ADVANTAGE \$98,500

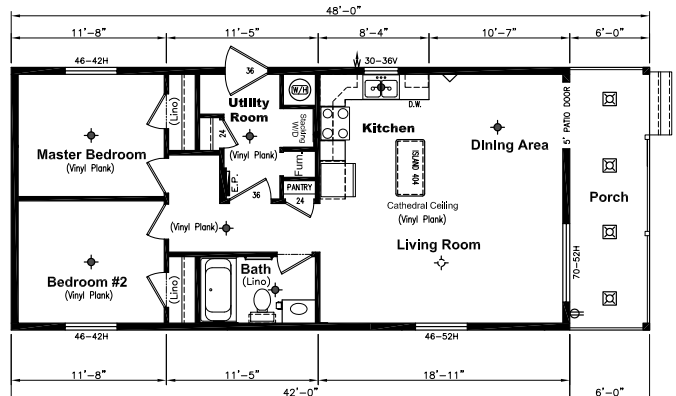


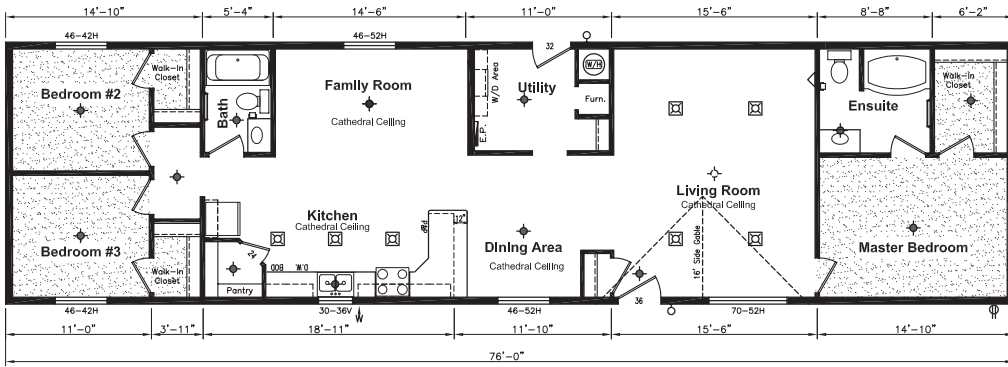
ARC-161C 16'X76' 1216SF
 3 BED, 2 BATH, WHIRLPOOL
 APPLIANCES, ISLAND, LRG UTILITY
 HE GAS FURNACE, OVAL TUB
\$104,897 SUMMER SALE
***ONE ONLY* OVER \$8K IN SAVINGS**



ARC ST-1618 16'X76' 1216SF
 4 BED, 2 BATH, WHIRLPOOL
 APPLIANCES, HE GAS FURNACE &
 HOT WATER, SIDE GABLE PLUS
 MORE EXTERIOR UPGRADES
STARTING AT \$112,895
ECO ADVANTAGE \$119,900

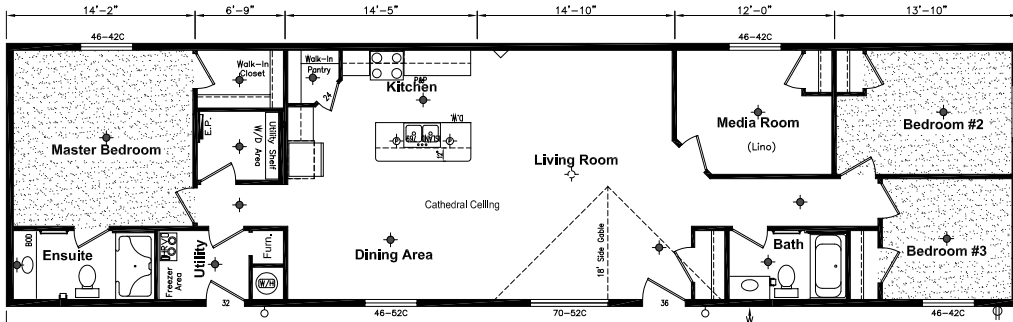
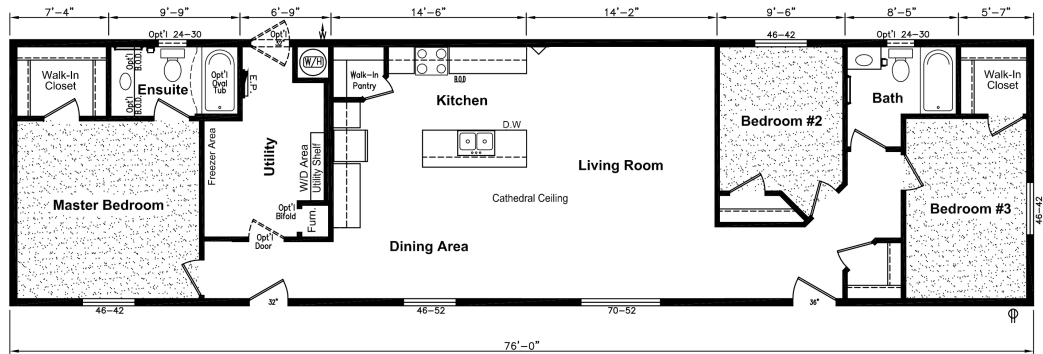
2020 ARC-CC46A 20'X46' 960SF
 2 BED, 1 BATH, COVERED PORCH 4 SEASON COTTAGE
 LVP FLOORING WITH WHIRLPOOL APPLIANCES INCL.
 DISHWASHER & LAUNDRY, ISLAND, AC READY HE GAS
 FURNACE, UTILITY ROOM
\$119,895 SUMMER SALE
***ONE ONLY* OVER \$8K IN SAVINGS**





ARC ML-201C 20'X76' 1520SF
 3 BED, 2 BATH, FAMILY ROOM, LIVING ROOM, WHIRLPOOL APPLIANCE PKG EATING BAR, OVAL WALL TUB
STARTING AT \$129,895
ECO ADVANTAGE \$137,900

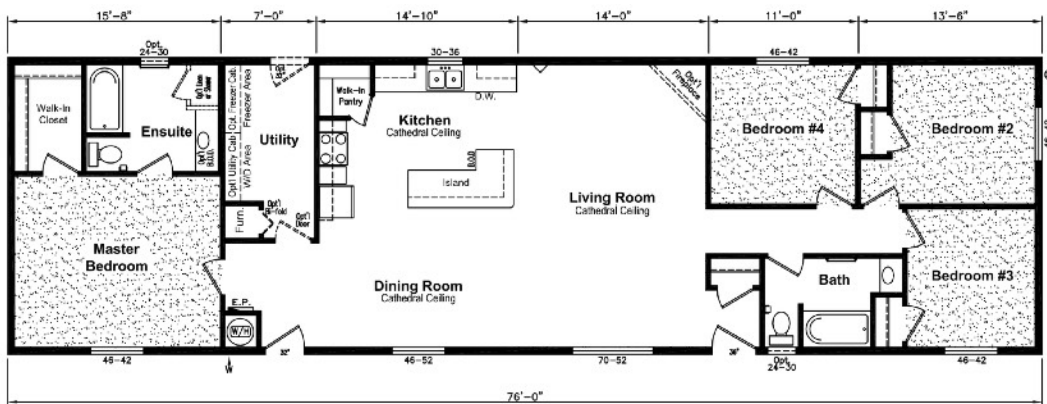
ARC ML-205 20'X76' 1520SF
 3 BED, 2 BATH, KITCHEN ISLAND WHIRLPOOL APPLIANCES
 LARGE UTILITY ROOM
STARTING AT \$131,895
ECO ADVANTAGE \$138,900



2020 ARC-ST4 20'X76' 1520SF
 4 BED, 2 BATH, KITCHEN ISLAND W/ EATING BAR, UPG EXTERIOR, FP RESISTANT STAINLESS STEEL WHIRLPOOL APPLIANCES, 5' WALK-IN SHOWER, AC READY HE GAS FURNACE
\$144,895 SUMMER SALE
***ONE ONLY* OVER 11K IN SAVINGS**

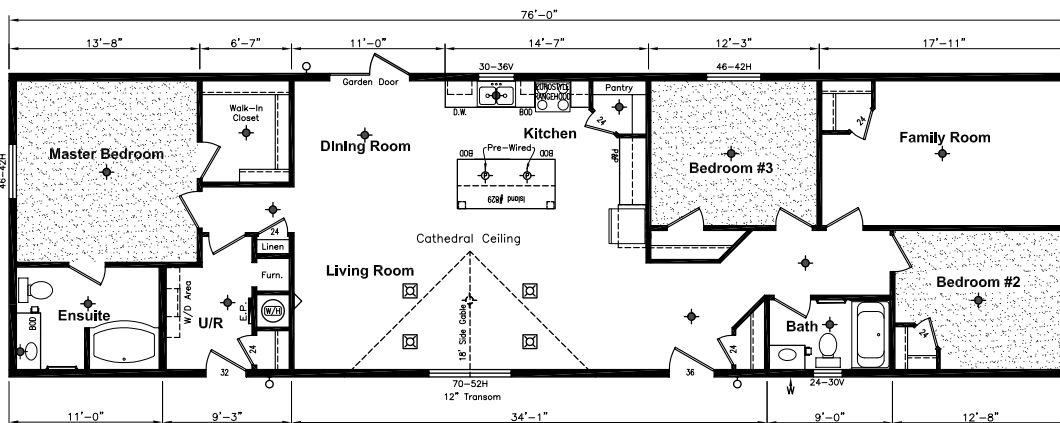
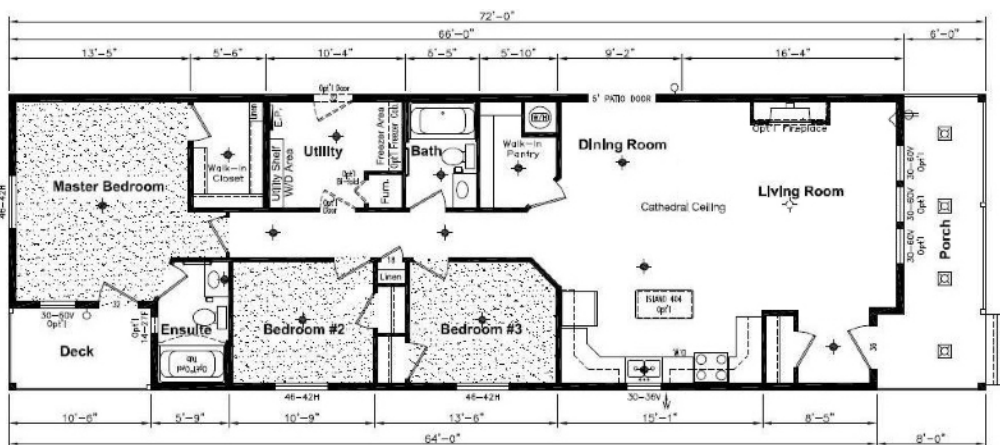
ARC MT-203 20'X76' 1520SF
 4 BED, 2 BATH, LVP FLOOR, DLX ENSUITE, WHIRLPOOL FP RESISTANT STAINLESS STEEL APPLIANCES W/WALL OVEN, FULL TILE BACKSPASH, SOLID SURFACE ACRYLIC COUNTERTOP W/UNDER-MOUNT SINKS & MUCH MORE!
STARTING AT \$159,895
ECO ADVANTAGE \$167,900





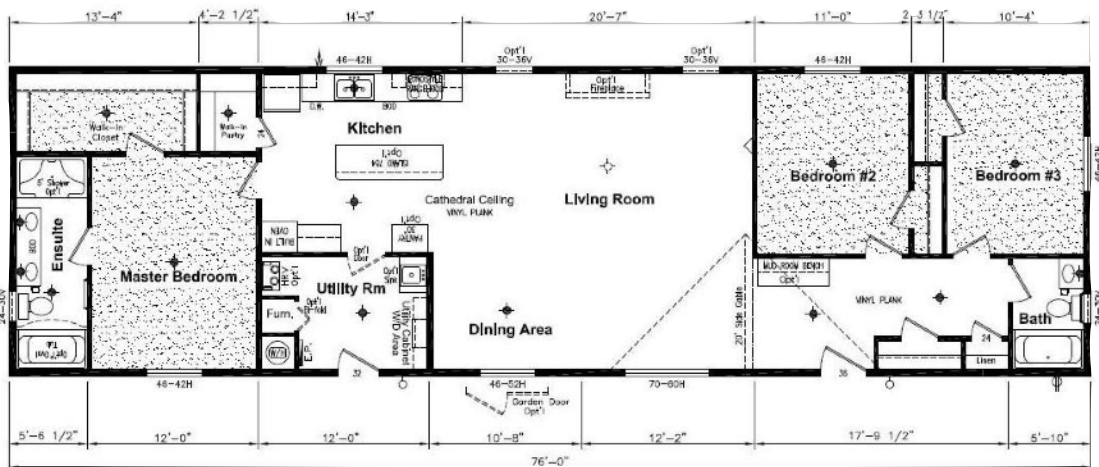
ARC ML-225 22'X76' 1672SF
 4 BED, 2 BATH, KITCHEN ISLAND, LRG
 UTILITY ROOM, OPEN CONCEPT
STARTING AT \$144,895
ECO ADVANTAGE \$152,900

ARC CC-2266A 22'X72' 1584SF
 3 BED, 2 BATH, COVERED FRONT
 PORCH & BACK DECK, DLX EXTERIOR
 LRG WALK-IN PANTRY, WHIRLPOOL
 KITCHEN APPLIANCES & MORE
STARTING AT \$154,895
ECO ADVANTAGE \$160,900



2020 ARC-FX4
22'X76' 1672SF
 4 BED/FLEX, 2 BATH, OPEN
 CONCEPT, UPGRADED EXTERIOR
 DLX ENSUITE, DLX ISLAND,
 WHIRLPOOL FP RESISTANT
 STAINLESS STEEL APPLIANCES, &
 MORE
\$167,895 SUMMER SALE
***ONE ONLY* OVER \$16K IN
 SAVINGS**

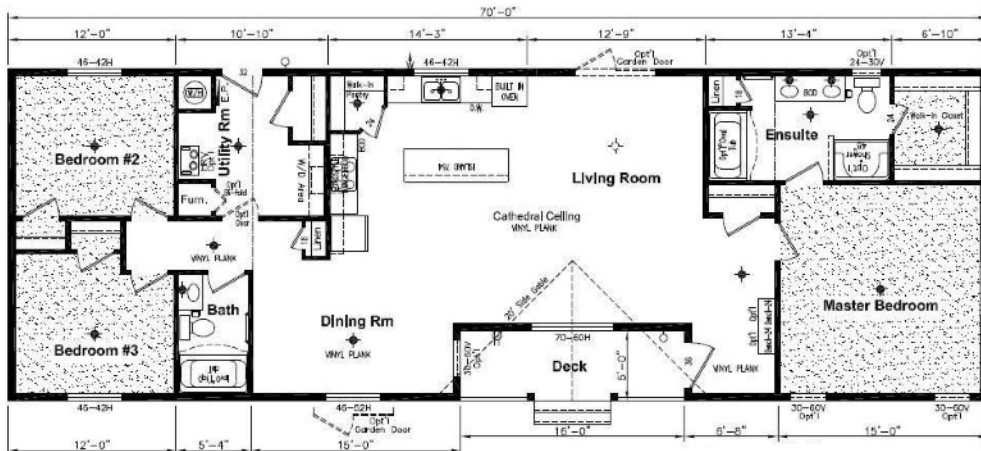
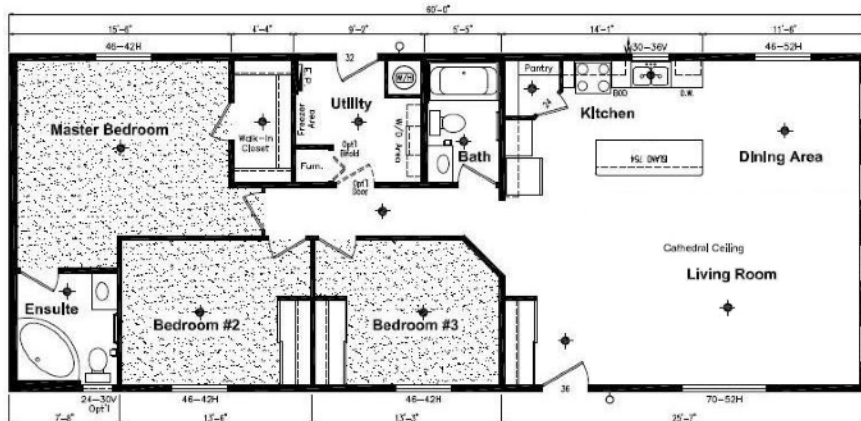
ARC MT-225
22'X76' 1672SF
 3 BED, 2 BATH, LVP FLOOR, DLX
 ENSUITE, WHIRLPOOL FP
 RESISTANT STAINLESS STEEL
 APPLIANCES W/WALL OVEN,
 FULL TILE BACKSPASH, SOLID
 SURFACE ACRYLIC COUNTERTOP
 W/UNDER-MOUNT SINKS &
 MUCH MORE!
STARTING AT \$172,895
ECO ADVANTAGE \$179,900





ARC RTM ML-244 24'X56' 1344SF
 2 BED, 2 BATH, UTILITY ROOM, OPEN
 CONCEPT, LARGE KITCHEN ISLAND
 COVERED COMPOSITE DECK
STARTING AT \$145,895
ECO ADVANTAGE \$152,900

ARC RTM ML-246 24'X60' 1440SF
 3 BED, 2 BATH, UTILITY ROOM, OPEN
 CONCEPT, LARGE KITCHEN ISLAND
STARTING AT \$154,895
ECO ADVANTAGE \$162,900



ARC RTM MT-243 24'X70' 1680SF
 3 BED, 2 BATH, COVERED DECK, LVP
 FLOOR, DLX ENSUITE, WHIRLPOOL FP
 RESISTANT STAINLESS STEEL APPLIANCES
 W/WALL OVEN, FULL TILE BACKSPASH
 SOLID SURFACE ACRYLIC COUNTERTOP
 W/UNDER-MOUNT SINKS & MUCH MORE!
STARTING AT \$179,895
ECO ADVANTAGE \$186,900

ARC RTM MK4A
24'X76' 1824SF
 3 LRG BED, 2 BATH, FLEX ROOM
 LARGE ISLAND, WALK-THROUGH
 PANTRY, DLX ENSUITE W/5'
 WALK-IN SHOWER, OVAL TUB
 AND MORE!
STARTING AT \$187,895
ECO ADVANTAGE \$195,900



ARC DF-357 28'X52' 1456SF
TWO-SECTION MODULAR HOME
 3 BED, 2 BATH, MORNING ROOM, UPGRADED
 EXTERIOR, APPLIANCES, DISHWASHER & MORE! CAN BE
 ORDERED FOR A BASEMENT OR OTHER FOUNDATION
 TYPES ON GRADE. INCLUDES SELF-CONTAINED
 MECHANICAL & ENGINEERED FLOOR SYSTEMS
CUSTOMIZE YOUR OWN



INTRODUCING THE ARC ECO ADVANTAGE

TRIPLE-PANE LOW E CASEMENT WINDOWS | HRV SYSTEM (HEAT RECOVERY VENTILATOR)
 ENERGY STAR APPLIANCES | LED LIGHT FIXTURES & BULBS THROUGHOUT
 HIGH EFFICIENCY GAS FURNACE & HWT | AIRTIGHT PROTOCOLS & HIGHER R-VALUES
 "An investment that will surely reduce energy usage & costs both immediately and in the long term"

FACTORY DIRECT LOCATION
 ARC MODULAR IS LOCATED AT THE ONLY
 SASKATCHEWAN MODULAR FACTORY: SRI
 ESTEVAN (SHELTER HOME SYSTEMS). OUR
 HOMES ARE TRULY SASKATCHEWAN BUILT!

TIME & BUDGET SAVINGS
 SIGNIFICANTLY FASTER AND LESS EXPENSIVE
 THAN SITE-BUILT HOMES. GET MORE VALUE
 FOR YOUR MONEY WITH FACTORY-BUILT
 HOUSING AND COMPLETE YOUR PROJECT IN
 LESS THAN HALF THE TIME.

BUILT FOR STRENGTH & QUALITY
 ENGINEERED FLOOR JOIST & TRUSS
 SYSTEMS, 2X6 EXT. WALLS SHEATHED ON
 BOTH SIDES, IN-DOOR CONSTRUCTION IN A
 CONTROLLED ENVIRONMENT



306.687.0303
ARCMODULAR.CA
 INFO@ARCMODULAR.CA

FACTORY LOCATION:
 #121 HIGHWAY 47 SOUTH
 ESTEVAN, SASKATCHEWAN
 (find us on Google & Apple Maps)

HOURS: MON-FRI 10-5, SAT 11-4

WARRANTY & SERVICE
 NEW HOME WARRANTY & PERSONALIZED
 SERVICE TO ENSURE YOU ARE COVERED IN A
 TIMELY FASHION. 10 YEAR STRUCTURAL.

EXPERT ADVICE & CONSULTATION
 SITE VISITS AND CONSULTATION WITH OUR
 ENGINEERING PARTNERS ARE PART OF
 DEALING WITH ARC MODULAR. WE PROVIDE
 EXPERT GUIDANCE & SOLUTIONS BASED ON
 YOUR UNIQUE SITUATION.

TURN-KEY PROJECTS
 *OPTIONAL COMPLETE PROJECT
 MANAGEMENT & GENERAL CONTRACTING
 FOR TURN-KEY MODULAR PROJECTS.

ADDITIONAL SERVICES & PARTS
 DESIGN, ENGINEERING, FOUNDATIONS,
 SKIRTING SYSTEMS, DECKS & STEPS, HOME
 PARTS & MATERIALS, EXTERIORS & MORE!

